



2026 ASPE Expo Exhibitor Prospectus

Oklahoma City Convention Center
Oklahoma City, OK

Expo: October 12 - 13

Convention: October 8 - 14

The Only Event Focused on the Plumbing Systems Design Industry — Showcasing Innovation, Advancements & Experiences.

The background image shows a busy exhibition hall with various booths and people. On the left, a booth for "Franklin Water Treatment" is visible, featuring a large yellow water filter. In the center, a booth for "h2flow" is visible. On the right, a booth for "MIFAB" is visible. The ASPE logo is overlaid on the bottom right of the image.

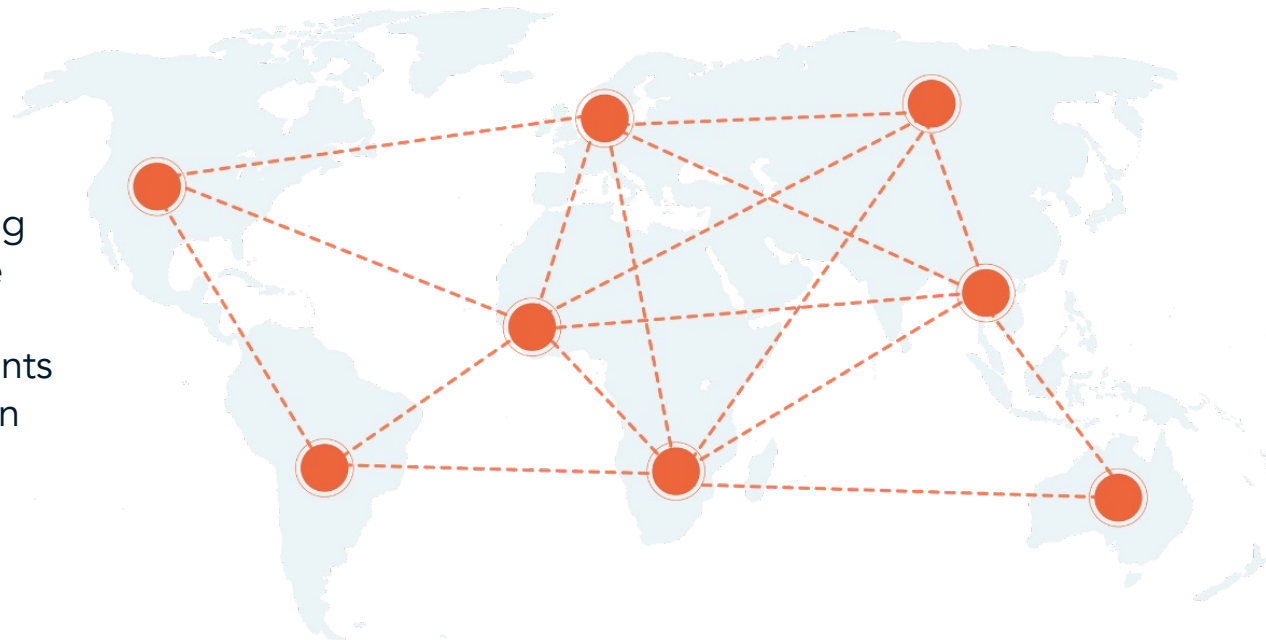
ASPE
American Society of
Plumbing Engineers™



A Worldwide Family of Plumbing Design Professionals

ASPE was founded in 1964 and currently has more than 7,400 members. Internationally, ASPE members are in the United States, Canada, Asia, Mexico, South and Central America, the South Pacific, Australia, Europe, Africa, Caribbean and the Middle East.

They represent an extensive network of experienced engineers, designers, contractors, code officials, manufacturers, and manufacturer representatives interested in advancing their careers, their profession, and the industry. ASPE is at the forefront of technology. In addition, ASPE represents members and promotes the profession among all segments of the construction industry.



Expo.aspe.org

“

Overall attendance was great and the booth was busy both days with engineers, designers, contractors, reps and other wanting to know more about our products. Great show!

- Chris Beiswenger,
Zoeller Pump Co., LLC

”



4,000+ Attendees

280 Exhibiting Companies

11 Exclusive Show Floor Hours

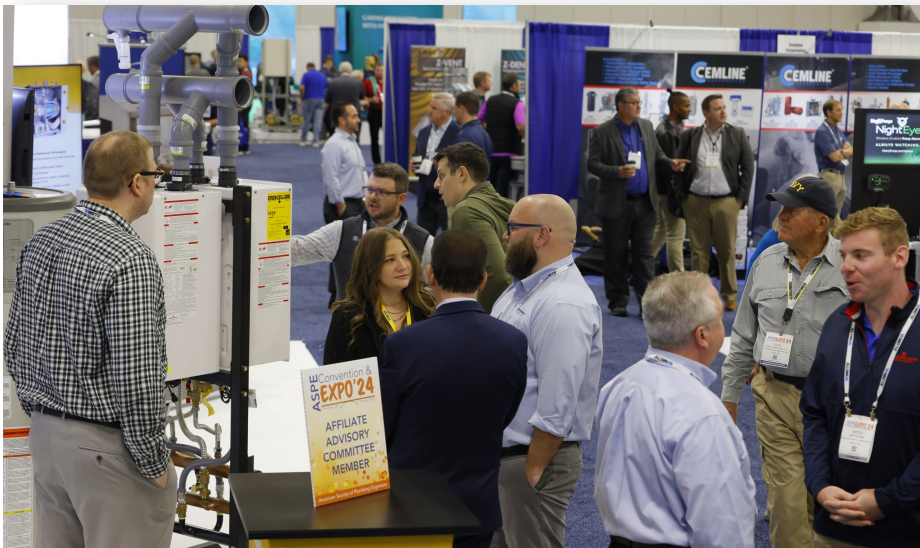
13% growth in
number of
exhibitors

9% growth
in net square
footage

Expo.aspe.org

Who Attends?

The ASPE Expo attracts a wide variety of the industry's leading companies across all job functions directly to you, making it the perfect place to get business done.



112% increase in
contractor
attendance

49% increase in
master plumber
attendance

Expo.aspe.org

Compared to 2022 attendance

Who Attends?

“

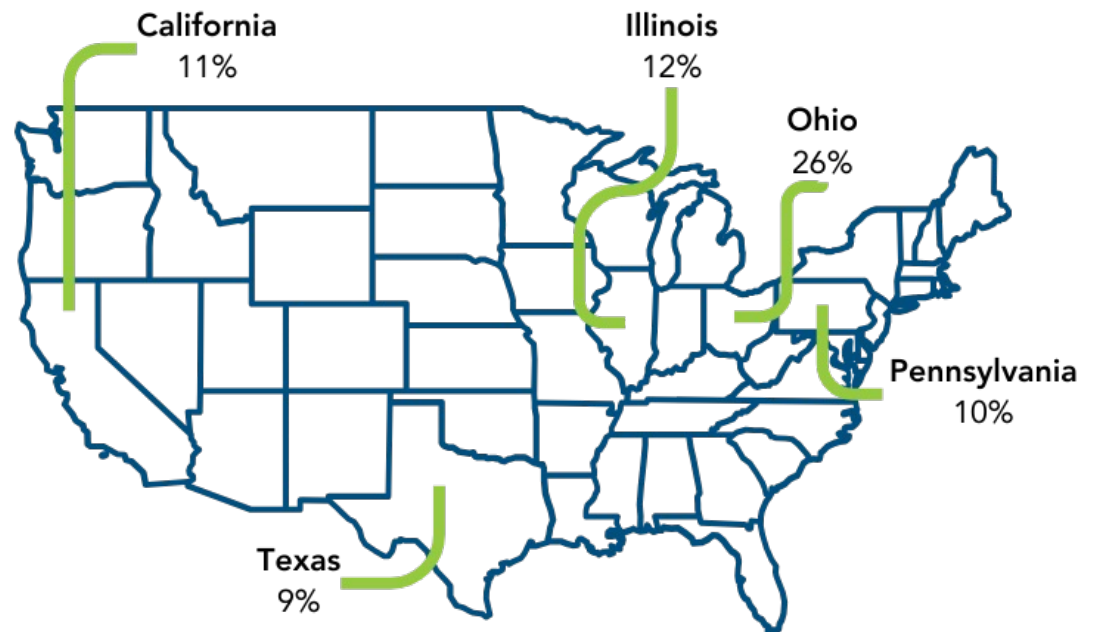
Every single time I attend the bi-annual ASPE Convention I return home feeling enriched. Spending several days filled with excellent meetings and a product exhibition, along with hundreds of others that share my passion for the industry, is something I always look forward to.

- Curtis Dady, PMI Sales

”



Top 5 States Attending in 2024



[Expo.aspe.org](https://expo.aspe.org)

Purchasing Power



30% of ASPE Expo attendees plan to follow up with 7+ companies after the show.

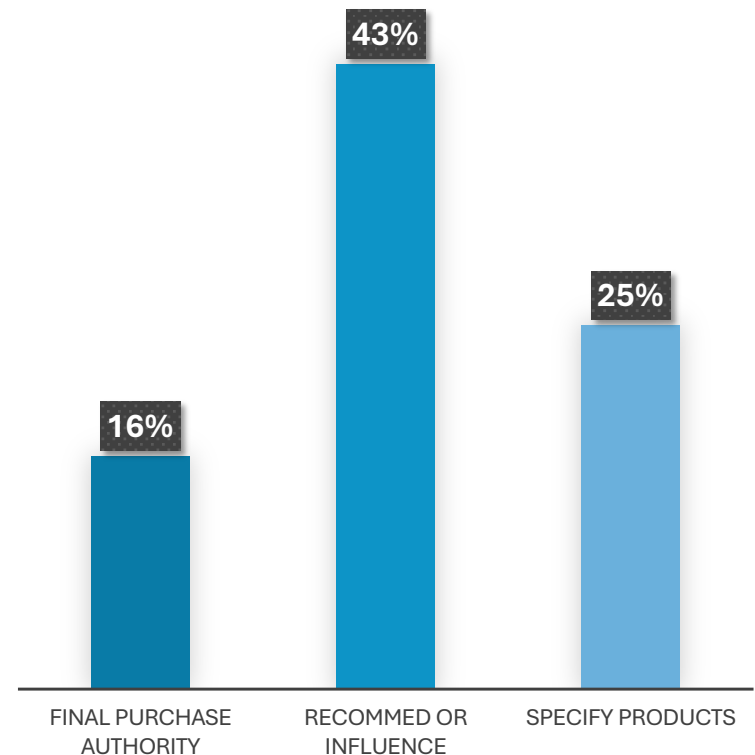
“

The majority of the manufacturers were engaging and there was no shortage of products to explore. The aisles were wide and allowed for easy access through the booths.

- 2024 Expo Attendee

”

Purchasing Power

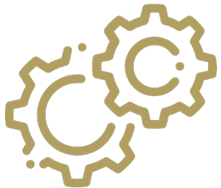


Why Exhibit?

Top 3 Objectives of Attendees at the ASPE Expo



Networking with exhibitors and attendees



Seeing the latest plumbing technology



Evaluate and see demos of new products/services

“

As a manufacturer, the ASPE Expo was a great environment for a wide variety of industry professionals to see our product line, interact with us, ask questions and plan for the future.

- Jon Chandler, Vista Water Group

”

Most attendees spent 6+ hours on the show floor over 2 days



Who Should Exhibit?

The ASPE Expo features hundreds of companies showcasing innovation, advancements, and experiences.

- Actuators
- Air valves and systems
- Carriers
- Compressors
- Computer software and CAD systems
- Drains / drain systems
- Drinking fountains / Water coolers
- Faucets and fixtures
- Fire protection equipment
- Fire pumps, engines, controllers, accessories
- Grease oil and solids interceptors
- HVAC
- Pipe couplings, fittings and systems
- Piped gas systems
- Plumbing booster systems
- Plumbing fixtures and fittings
- Project management tools
- Pumps and tanks
- Rainwater / stormwater collection systems
- REVIT / BIM provider
- Safety products & technology
- Security fixtures
- Sewage pumps and equipment
- Shower systems
- Sinks and basins
- Tanks
- Toilets
- Traps
- Vacuum pumps and systems
- Valves – air and automatic
- Wash fountains
- Water heaters
- Water treatment

Booth Info

As part of your exhibitor package, all 2026 ASPE exhibitors receive:

- **Access:** complimentary entrance for all exhibitor personnel to the Sunday Night Party
- **Online Listing:** company description, logo, and URL on the ASPE Expo website map
- **Mobile App Listing:** company description, and URL in the ASPE Convention & Expo mobile app
- **Custom Invitations:** complimentary, personalized email invitations and banner ads to easily invite your guests to the 2026 ASPE Convention & Expo
- **Opportunity:** by exhibiting, you can participate in ASPE's booth-traffic generating Patron Program or select from a wide array of sponsorship options

Expo Hall Hours

Monday, October 12:
11am - 5pm

Tuesday, October 13:
10am - 3pm

Pricing

\$36 per square foot



[Expo.aspe.org](https://expo.aspe.org)

Level Up with the Patron Program

Bring high value to the 2026 ASPE Expo, thus boosting show attendance and traffic in your booth by becoming an official ASPE Patron Partner!

- All proceeds collected via the Patron Program are put right back into the Expo to develop new and exciting ways to keep attendees on the show floor. The Patron Program enables exhibitors to collaborate and combine their resources to attract more attendees to your booth, providing increased visibility both before the event and onsite. This collaboration makes the Patron Program a win-win for all exhibitors who join!
- Exclusive benefits
 - One additional priority point for every 100 sq/ft of exhibit space your company reserves
 - Prominent recognition onsite via signage in the exhibit hall and by registration
 - Company name and URL to your website highlighted on the ASPE website
 - Post-show attendee mailing list in electronic format (emails not included)

BONUS! All 2026 Patrons will be placed in a drawing to win a post-show email to attendees (a \$6,000 value)!

INVESTMENT: \$300 per 100 square feet



Expo.aspe.org

Contact Tony To Get Started Today



Tony Hayes

Director of Sales

Phone: +1 571-313-5793

Email: thayes@taffyevents.com

[REQUEST A BOOTH](#)

[VIEW THE FLOOR PLAN](#)

Expo.aspe.org